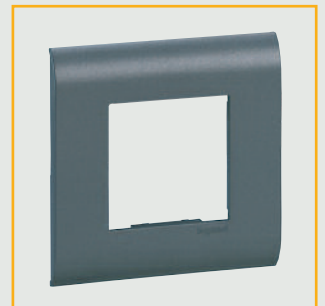


New faces...

Mosaic now offers an extended range of cover plates, all of which clip quickly and easily into place with no unsightly screws on the finished installation... and because the cover plates can be removed simply by unclipping, there is no need to remove the accessory whilst decorating takes place.



SOLUTIONS TO COMPLY WITH PART M



Mosaic's large rockers can be used to meet with requirements for ease of use.

A dark faceplate, such as the new Stardust grey finish shown here, can be fitted to a white or lightly coloured wall to create the colour contrast needed for the visually impaired.

